

TOWORKFOR®



X-FAST	4-7
SAFETY RUNNERS	8-13
FULL-GRIP MICHELIN	14-17
URBAN	18-19
STREET	20-23
WORKING CLASS HERO	24-27
SPORT 2K14	28-31
LADY	32-33
ATOMIC	34-35
SPORT	36-37
FUSION	38-39
CITY	40-41
ADVANTAGE	42-43
UTILITY	44-45
PROMOTIONAL MATERIALS	48
ACESSORIES	49
TOWORKFOR SOLES	50
TOWORKFOR MATERIALS	51
STANDARDS	52



X-FAST

TECHNICAL SPECS

X-HEEL SUPPORT

Superb stability and flexibility for the foot.

BIORELAX INSOCK

Total recovery insock with active carbon filter to reduce odour.

Q-FLEX INSOLE

Anti-perforation, non-metallic and anti-static insole.

SAFELIGHT

EVA SAFETY SOLE

Smooth, lightweight with excellent anti-slip and heat resistance features.

SRC HRO Certification

ARBOL HYDRO FABRIC

Reflective technology with excellent water resistance features.

S3 Certification

ALUMINIUM TOE CAP

Lightweight toe cap against pressure up to 200 joules.

**ONE OF THE LIGHTEST
SAFETY RUNNERS EVER MADE**

X-FAST



FASTER THAN LIGHTNING. LIGHT AS A FEATHER.

Evolution is paramount.
The X-FAST™ improves the world of safety with an updated design and a new exclusive technology:
Eva Safety Sole - SRC & HRO.

Making it one of the lightest Safety Runners ever made.



X-N2

8A01.80 S3 SRC HRO

Material Arbol Hydro Fabric
Lining Poromax
Sole Safelight - EVA Safety
Toe Cap Aluminium
Insole Q-flex - Composite
Insock Biorelax
Size 35 - 48



X-C02

8A01.21 S3 SRC HRO

Material Grey Microfiber
Lining Poromax
Sole Safelight - EVA Safety
Toe Cap Aluminium
Insole Q-flex - Composite
Insock Biorelax
Size 35 - 48



X-02

8A01.20 S3 SRC HRO

Material Black Microfiber
Lining Poromax
Sole Safelight - EVA Safety
Toe Cap Aluminium
Insole Q-flex - Composite
Insock Biorelax
Size 35 - 48



X-AR

8A01.23 S3 SRC HRO

Material Blue Microfiber
Lining Poromax
Sole Safelight - EVA Safety
Toe Cap Aluminium
Insole Q-flex - Composite
Insock Biorelax
Size 35 - 48



SAFETY RUNNERS®

TECHNICAL SPECS



BIORELAX INSOCK

Total recovery insock with active carbon filter to reduce odour.

AIR TUBELESS

MICROFIBER

Water resistant and highly durable material made of polyester fibers. Animal Friendly.

S3 Certification

Q-FLEX INSOLE

Anti-perforation, non-metallic and anti-static insole.

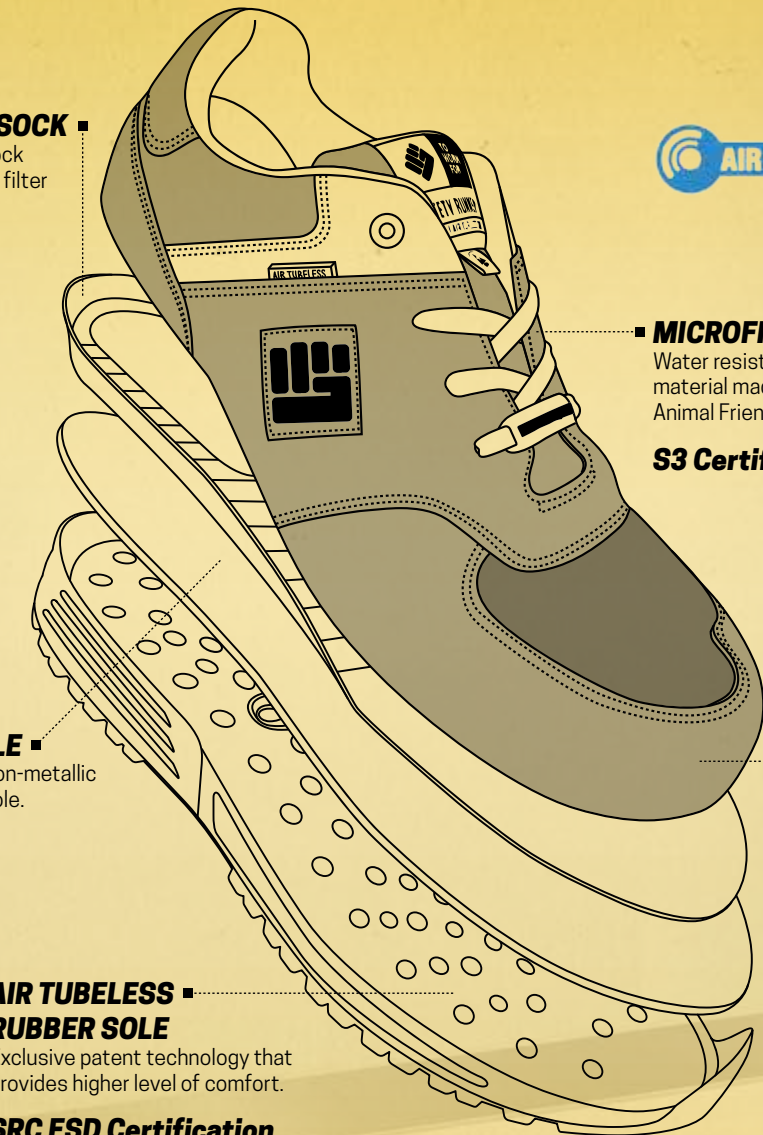
ALUMINIUM TOE CAP

Lightweight toe cap against pressure up to 200 joules.

AIR TUBELESS RUBBER SOLE

Exclusive patent technology that provides higher level of comfort.

SRC ESD Certification



A REVOLUTIONARY COMFORT SYSTEM



URBAN
8A86.00 S3 SRC ESD

Material Black & Grey Microfiber
Lining Poromax
Sole Air Tubeless - Rubber
Toe Cap Aluminium
Insole Q-flex - Composite
Insock Biorelax
Size 36 - 47



GRAFFITI
8A86.07 S3 SRC ESD

Material Black & Red Microfiber
Lining Poromax
Sole Air Tubeless - Rubber
Toe Cap Aluminium
Insole Q-flex - Composite
Insock Biorelax
Size 36 - 47



REBEL
8B86.07 S3 SRC ESD

Material Black & Red Microfiber
Lining Poromax
Sole Air Tubeless - Rubber
Toe Cap Aluminium
Insole Q-flex - Composite
Insock Biorelax
Size 36 - 47



POWER
8B86.00 S3 SRC ESD

Material Black & Grey Microfiber
Lining Poromax
Sole Air Tubeless - Rubber
Toe Cap Aluminium
Insole Q-flex - Composite
Insock Biorelax
Size 36 - 47



TOWORKFOR
INTRODUCES

AIR TUBELESS TECHNOLOGY

OPTIMAL PERFORMANCE

EXTREME COMFORT

PATENTED MIDSOLE SYSTEM, TESTED AND CERTIFICATED BY INESCOPI



■ **PREVENTS LOW BACK PAIN**
Reduction in lower back muscle activity that prevents low back pain

■ **UP TO 52% INCREASED THERMAL INSULATION**
Providing warmer feet

■ **IMPROVED SHOCK ABSORPTION**
Reduces impact forces up to 55%



STREET
8A11.30 S3 SRC ESD

Material Black Microfiber
Lining Poromax
Sole Air Tubeless - Rubber
Toe Cap Aluminium
Insole Q-flex - Composite
Insock Biorelax
Size 36 - 47



STRIDE
8A86.13 S3 SRC ESD

Material Grey & Blue Microfiber
Lining Poromax
Sole Air Tubeless - Rubber
Toe Cap Aluminium
Insole Q-flex - Composite
Insock Biorelax
Size 36 - 47



JUMPER
8A11.31 S1P SRC ESD

Material Grey Microfiber
Lining Poromax
Sole Air Tubeless - Rubber
Toe Cap Aluminium
Insole Q-flex - Composite
Insock Biorelax
Size 36 - 47



RUNNER
8A81.50 S1P SRC ESD

Material Grey Microfiber
Lining Poromax
Sole Air Tubeless - Rubber
Toe Cap Aluminium
Insole Q-flex - Composite
Insock Biorelax
Size 36 - 47



The new SAFETY RUNNERS® are exclusively equipped with the AIR TUBELESS sole system, a unique and patented technology, also used in running shoes. It guarantees an extreme comfort and optimal performance during a hard day's work, from the beginning until the end. With the development of safety runners, TOWORKFOR® now presents its own performance mentality: **FINISH WHAT YOU START.**

FINISH WHAT YOU START

COMFORT TECHNOLOGY





FULL GRIP™

TECHNICAL SPECS

HEEL SUPPORT SYSTEM

Special system that strengthens the heel portion of the footwear. Stabilizes the leg and protects the heel.

COMFORT INSOCK

Soft and light with anti-static points. Easy to remove for cleaning and drying.

Q-FLEX INSOLE

Anti-perforation, non-metallic and anti-static insole.

MICHELIN NORTH NITRILE RUBBER SOLE

Exclusive design and compound with great abrasion resistance, anti-static characteristics and excellent oils and fire resistance.

SRC HRO Certification



NUBUCK LEATHER

Long lasting, flexible and breathable.

S3 Certification

CARBONLIGHT TOE CAP

Non-metallic and ultra-light toe cap against pressure up to 200 joules.

TOE REINFORCEMENT

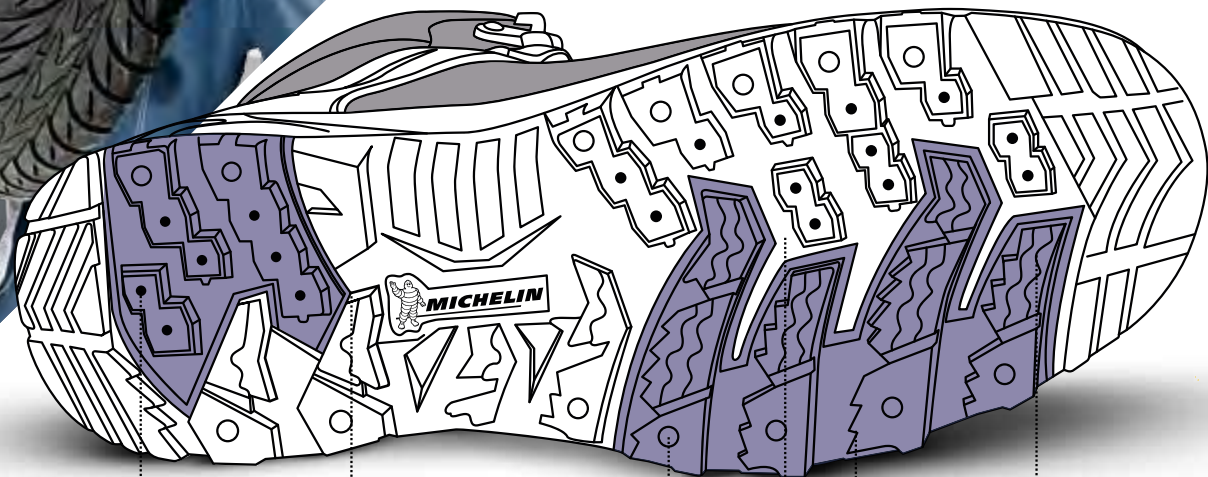
Extra protection and resistance.

TRACTION & GRIP TECHNOLOGY WITH MICHELIN SOLE



NITRILE RUBBER SOLE

TECHNOLOGY



ANTI-SLIP TREAD
For excellent adherence on all types of slippery floor surfaces

HIGH EDGED TREAD
For maximum traction

PUMPS
For absorbing and evacuating water to improve tread contact with the road surface

BITING EDGE
For optimal performance on ice and snow

SELF CLEANING TREAD DESIGN

SPIKES
To break water surface

BRAKE
6A06.20 S3 SRC HRO

Material Black Nubuck Leather
Lining Poromax
Sole Michelin North - Nitrile Rubber
Toe Cap CarbonLight - Composite
Insole Q-flex - Composite
Insock Comfort
Size 39 - 47



WHEELS
6B06.20 S3 SRC HRO

Material Black Nubuck Leather
Lining Poromax
Sole Michelin North - Nitrile Rubber
Toe Cap CarbonLight - Composite
Insole Q-flex - Composite
Insock Comfort
Size 39 - 47



TRACTION
6C07.00 S3 SRC HRO

Material Black Premium Leather
Lining Poromax + Hydratec
Sole Michelin North - Nitrile Rubber
Toe Cap CarbonLight - Composite
Insole Q-flex - Composite
Insock Comfort
Size 39 - 47



URBAN

TECHNICAL SPECS

MICROFIBER

Water resistant and highly durable material made of polyester fibers. Animal Friendly.

S3 Certification

Q-FLEX INSOLE

Anti-perforation, non-metallic and anti-static insole.

BASKET RUBBER SOLE

Exclusive design that guarantees higher flexibility, comfort and elasticity.

SRC ESD Certification

STEEL TOE CAP

Protects against pressure up to 200 joules.

COMFORT INSOCK

Soft and light with anti-static points. Easy to remove for cleaning and drying.

**MODERN
SAFETY SHOES**



HALF PIPE

8A11.23 S3 SRC ESD

Material Blue Microfiber
Lining Poromax
Sole Basket - Rubber
Toe Cap Steel
Insole Q-flex - Composite
Insock Comfort
Size 35 - 47



GHOST

8A11.21 S3 SRC ESD

Material Grey Microfiber
Lining Poromax
Sole Basket - Rubber
Toe Cap Steel
Insole Q-flex - Composite
Insock Comfort
Size 35 - 47



BE SAFE BE URBAN

Safety Shoes Collection for Active Workers



RUBBER SOLE | SRC & ESD

The exclusive design was inspired by basket sneakers to guarantee higher flexibility, optimal comfort and great elasticity. Excellent slip resistance, either in wet steel floor or ceramic floor. Electro-static discharge certification.

STREET

TECHNICAL SPECS



COMFORT INSOCK

Soft and light with anti-static points. Easy to remove for cleaning and drying.

LADY LAST

Respects the anatomy of the female foot with a wider toe area and a narrower heel and ankle zone.

MICROFIBER

Water resistant and highly durable material made of polyester fibers. Animal Friendly.

S3 Certification

Q-FLEX INSOLE

Anti-perforation, non-metallic and anti-static insole.

ALUMINIUM TOE CAP

Lightweight toe cap against pressure up to 200 joules.

ATOMIC

BICOLOR TPU SOLE

Micro geometric hexagon trace which ensures excellent anti-slip features.

SRC Certification

**SAFETY SHOES
JUST FOR LADIES**



YOU BELIEVE YOU

An exclusive collection of safety sneakers just for ladies.

A lady last respects the anatomy of the female foot with a wider toe area and narrower heel and ankle zone. That ensures greater comfort according to ergonomic principles. The range of colors make every woman feel like a lady every day in every work.



BAHNHOFSTRASSE 8A00.23 S3 SRC

Material Blue Microfiber
Lining Poromax
Sole Atomic - Bicolor TPU
Toe Cap Aluminium
Insole Q-flex - Composite
Insock Comfort
Size 35 - 42



BOND STREET 8A00.20 S3 SRC

Material Black Microfiber
Lining Poromax
Sole Atomic - Bicolor TPU
Toe Cap Aluminium
Insole Q-flex - Composite
Insock Comfort
Size 35 - 42



AVENUE MONTAIGNE 8A00.22 S1P SRC

Material Blue Microfiber
Lining Poromax
Sole Atomic - Bicolor TPU
Toe Cap Aluminium
Insole Q-flex - Composite
Insock Comfort
Size 35 - 42



FIFTH AVENUE 8A00.21 S1P SRC

Material Grey Microfiber
Lining Poromax
Sole Atomic - Bicolor TPU
Toe Cap Aluminium
Insole Q-flex - Composite
Insock Comfort
Size 35 - 42



GINZA 8A00.24 S3 SRC

Material Purple Microfiber
Lining Poromax
Sole Atomic - Bicolor TPU
Toe Cap Aluminium
Insole Q-flex - Composite
Insock Comfort
Size 35 - 42



VIA MONTE NAPOLEONE 8A00.25 S1P SRC

Material Yellow Microfiber
Lining Poromax
Sole Atomic - Bicolor TPU
Toe Cap Aluminium
Insole Q-flex - Composite
Insock Comfort
Size 35 - 42





WORKING CLASS HERO

TECHNICAL SPECS

COMFORT INSOCK ■
Soft and light with anti-static points. Easy to remove for cleaning and drying.

Q-FLEX INSOLE ■
Anti-perforation, non-metallic and anti-static insole.

HERO ■
NITRILE RUBBER SOLE
Excellent adhesion to the surface, either in wet steel floor or irregular industrial floor. Resistant against high temperatures up to 300°C.
SRC HRO Certification

■ **NUBUCK LEATHER**
Long lasting, flexible and breathable.
S3 Certification

■ **CARBONLIGHT TOE CAP**
Non-metallic and ultra-light toe cap against pressure up to 200 joules.



SAFETY SHOES FOR HARD WORKERS

THE NEW 'HERO' SOLE. MORE GRIP ON EVERY GROUND.

The 'HERO' sole has a revolutionary vintage design that makes the shoe perfectly suitable for all terrains. It offers excellent grip, effective energy absorption and comfortable rebound. The sole is self-cleaning and resistant to high temperatures of up to 300°C.



BULL 8A67.22 S3 SRC HRO

Material Brown Nubuck Leather
Lining Space 3D
Sole Hero - Nitrile Rubber
Toe Cap CarbonLight - Composite
Insole Q-flex - Composite
Insock Comfort
Size 35 - 51



GORILLA 8A67.20 S3 SRC HRO

Material Black Nubuck Leather
Lining Space 3D
Sole Hero - Nitrile Rubber
Toe Cap CarbonLight - Composite
Insole Q-flex - Composite
Insock Comfort
Size 35 - 51



TIGER 8B67.26 S3 SRC HRO

Material Yellow Nubuck Leather
Lining Space 3D
Sole Hero - Nitrile Rubber
Toe Cap CarbonLight - Composite
Insole Q-flex - Composite
Insock Comfort
Size 35 - 51



LYNX 8B67.23 S3 SRC HRO

Material Blue Nubuck Leather
Lining Space 3D
Sole Hero - Nitrile Rubber
Toe Cap CarbonLight - Composite
Insole Q-flex - Composite
Insock Comfort
Size 35 - 51



BISON 8B67.22 S3 SRC HRO

Material Brown Nubuck Leather
Lining Space 3D
Sole Hero - Nitrile Rubber
Toe Cap CarbonLight - Composite
Insole Q-flex - Composite
Insock Comfort
Size 35 - 51



PANTHER 8B67.20 S3 SRC HRO

Material Black Nubuck Leather
Lining Space 3D
Sole Hero - Nitrile Rubber
Toe Cap CarbonLight - Composite
Insole Q-flex - Composite
Insock Comfort
Size 35 - 51



SPORT 2K14

TECHNICAL SPECS

SPORT 2K14



COMFORT INSOCK ■
Soft and light with anti-static points. Easy to remove for cleaning and drying.

Q-FLEX INSOLE ■
Anti-perforation, non-metallic and anti-static insole.

SPORT 3 PU | TPU SOLE ■
Soft PU midsole that provides comfort and a TPU outsole for good adhesion and abrasion resistance.

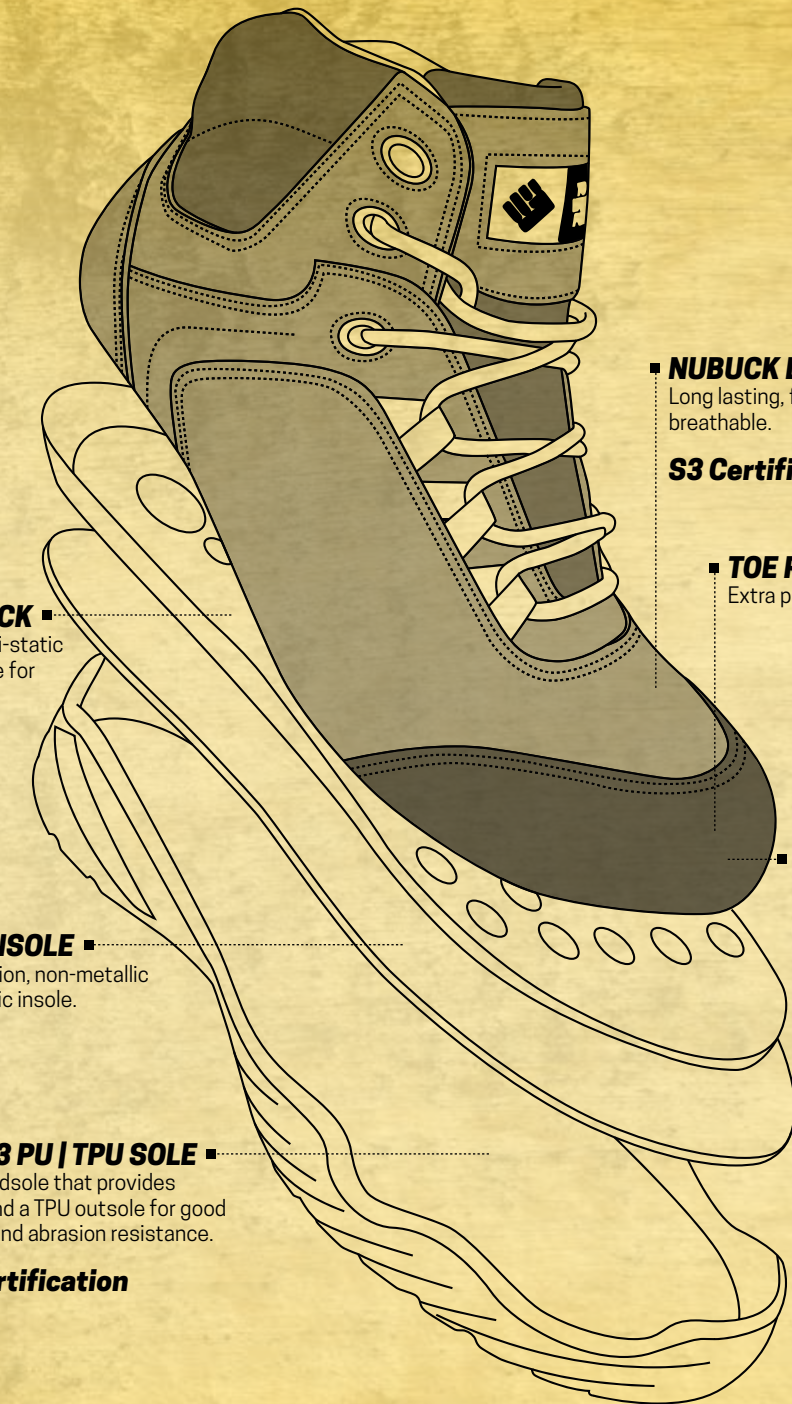
SRC Certification

■ **NUBUCK LEATHER**
Long lasting, flexible and breathable.

S3 Certification

■ **TOE REINFORCEMENT**
Extra protection and resistance.

■ **CARBONLIGHT TOE CAP**
Non-metallic and ultra-light toe cap against pressure up to 200 joules.



**HIGH PERFORMANCE
SAFETY SHOES**



MAXIMUM PROTECTION ACROSS THE ENTIRE SOLE SURFACE.

The flat sole offers several advantages to the user's feet. The body weight is distributed equally over the whole foot instead of pressing only on the toes. The rounded heel makes the sole particularly flexible and is equipped with efficient energy absorption. The squared plugs guarantee high grip achieving SRC level.

This dual density polyurethane/TPU sole provides high comfort and shock absorption.



BUFFALO 8B71.20 S3 SRC

Material Black Nubuck Leather
Lining Poromax
Sole Sport 3 - PU | TPU
Toe Cap CarbonLight - Composite
Insole Q-flex - Composite
Insock Comfort
Size 35 - 48



BEETLE 8A71.20 S3 SRC

Material Black Nubuck Leather
Lining Poromax
Sole Sport 3 - PU | TPU
Toe Cap CarbonLight - Composite
Insole Q-flex - Composite
Insock Comfort
Size 35 - 48



WASP 8A71.30 S1P SRC

Material Black Nubuck Leather
Lining Poromax
Sole Sport 3 - PU | TPU
Toe Cap CarbonLight - Composite
Insole Q-flex - Composite
Insock Comfort
Size 35 - 48



PANDA 8A71.22 S3 SRC

Material Brown Nubuck Leather
Lining Poromax
Sole Sport 3 - PU | TPU
Toe Cap CarbonLight - Composite
Insole Q-flex - Composite
Insock Comfort
Size 35 - 48



FOX 8B71.22 S3 SRC

Material Brown Nubuck Leather
Lining Poromax
Sole Sport 3 - PU | TPU
Toe Cap CarbonLight - Composite
Insole Q-flex - Composite
Insock Comfort
Size 35 - 48



LADY

TECHNICAL SPECS

COMFORT INSOCK

Soft and light with anti-static points. Easy to remove for cleaning and drying.

REAL LADY LAST

Respects the anatomy of the foot with a wider toe area and a narrower heel and ankle zone.

NUBUCK LEATHER

Long lasting, flexible and breathable.

S3 Certification

Q-FLEX INSOLE

Anti-perforation, non-metallic and anti-static insole.

SPORT PU SOLE

Extremely light, flexible and elastic.

SRB Certification

ALUMINIUM TOE CAP

Lightweight toe cap against pressure up to 200 joules.

TOE REINFORCEMENT

Extra protection and resistance.

**OUTDOOR SAFETY SHOES
JUST FOR LADIES**



TOWORKFOR SAFETY SHOES JUST FOR LADIES



EVE

8A25.24 S3 SRB

Material Black Nubuck Leather
Lining Space 3D
Sole Sport - PU
Toe Cap Aluminium
Insole Q-flex - Composite
Insock Comfort
Size 35 - 42



OLIVIA

8B25.24 S3 SRB

Material Black Nubuck Leather
Lining Space 3D
Sole Sport - PU
Toe Cap Aluminium
Insole Q-flex - Composite
Insock Comfort
Size 35 - 42



ATOMIC

TECHNICAL SPECS

COMFORT INSOCK
Soft and light with anti-static points. Easy to remove for cleaning and drying.



MICROFIBER

Water resistant and highly durable material made of polyester fibers. Animal Friendly.

S3 Certification

ALUMINIUM TOE CAP

Lightweight toe cap against pressure up to 200 joules.

Q-FLEX INSOLE

Anti-perforation, non-metallic and anti-static insole.

ATOMIC BICOLOR TPU SOLE

Micro geometric hexagon trace which ensures excellent anti-slip features.

SRC Certification

LIGHT AND TRENDY SAFETY SHOES



PENGUIN
8A41.20 S3 SRC

Material Black Microfiber
Lining Poromax
Sole Atomic - Bicolor TPU
Toe Cap Aluminium
Insole Q-flex - Composite
Insock Comfort
Size 35 - 48



CHEETAH
8A75.20 S1P SRC

Material Black Microfiber
Lining Poromax
Sole Atomic - Bicolor TPU
Toe Cap Aluminium
Insole Q-flex - Composite
Insock Comfort
Size 35 - 48



LIGHT, BRIGHT AND SERIOUSLY EASYGOING.

Ultra flat, pleasantly light and bright-coloured.
This sole consists of micro-geometrical hexagonal plugs to guarantee full contact and stability.
Self-cleaning.



SPORT

TECHNICAL SPECS

COMFORT INSOCK
Soft and light with anti-static points. Easy to remove for cleaning and drying.



■ **NUBUCK LEATHER**
Long lasting, flexible and breathable.
S3 Certification

■ **TOE REINFORCEMENT**
Extra protection and resistance.

■ **SPORT PU SOLE**
Extremely light, flexible and elastic.

SRB Certification

■ **CARBONLIGHT TOE CAP**
Non-metallic and ultra-light toe cap against pressure up to 200 joules.

■ **Q-FLEX INSOLE**
Anti-perforation, non-metallic and anti-static insole.

OUTDOOR AND FLEXIBLE SAFETY SHOES



TEXAS
8A08.20 S3 SRB

Material Black Nubuck Leather
Lining Space 3D
Sole Sport - PU
Toe Cap CarbonLight - Composite
Insole Q-flex - Composite
Insock Comfort
Size 35 - 48



DALLAS
8A08.29 S3 SRB

Material Black Nubuck Leather
Lining Space 3D
Sole Sport - PU
Toe Cap CarbonLight - Composite
Insole Q-flex - Composite
Insock Comfort
Size 35 - 48



MADEIRA
8A51.81 S1P SRB

Material Grey Suede Leather
Lining Space 3D
Sole Sport - PU
Toe Cap CarbonLight - Composite
Insole Q-flex - Composite
Insock Comfort
Size 35 - 48



ACORES
8A51.83 S1P SRB

Material Blue Suede Leather
Lining Space 3D
Sole Sport - PU
Toe Cap CarbonLight - Composite
Insole Q-flex - Composite
Insock Comfort
Size 35 - 48



FUSION

TECHNICAL SPECS

RUB X PRO HEEL SUPPORT

Higher protection for the foot with extreme balance and stability features.

HYDRATEC

Waterproof membrane that keeps the foot warm and dry in extreme situations.

NUBUCK LEATHER

Long lasting, flexible and breathable.

S3 Certification

CARBONLIGHT TOE CAP

Non-metallic and ultra-light toe cap against pressure up to 200 joules.

COMFORT INSOCK

Soft and light with anti-static points. Easy to remove for cleaning and drying.

Q-FLEX INSOLE

Anti-perforation, non-metallic and anti-static insole.

FUSION BICOLOR PU SOLE

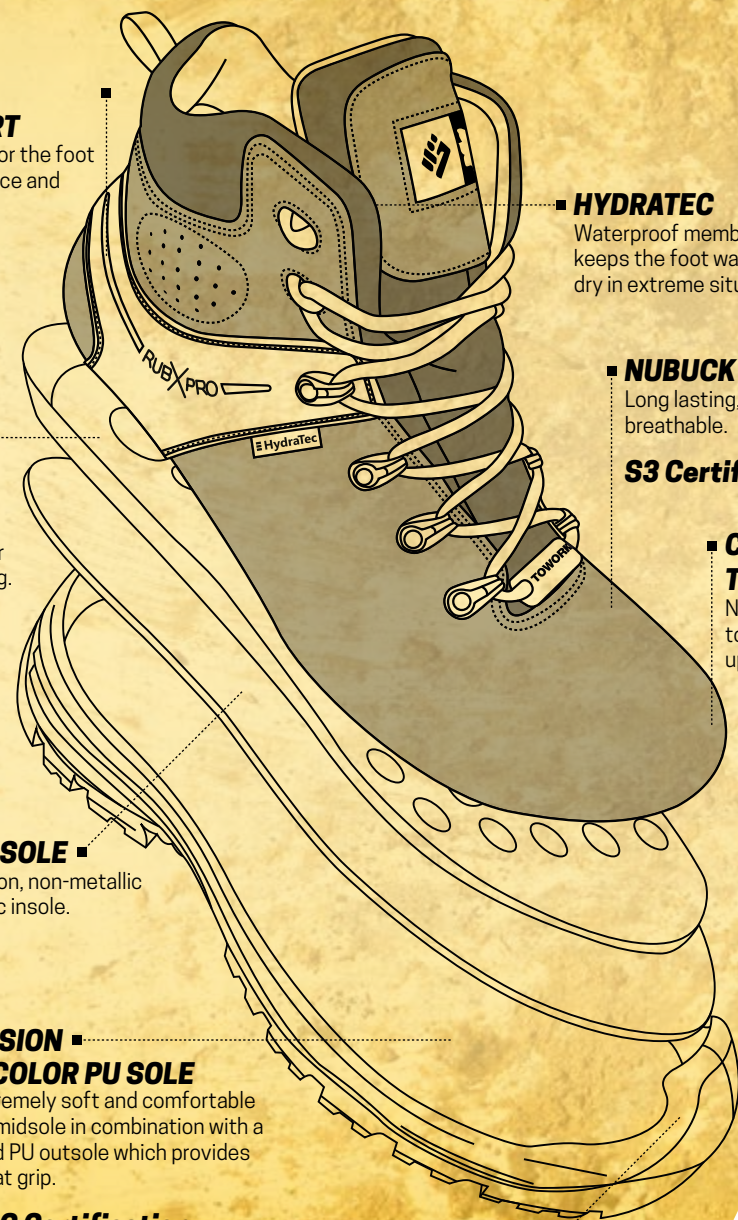
Extremely soft and comfortable PU midsole in combination with a hard PU outsole which provides great grip.

SRC Certification

TOE REINFORCEMENT

Extra protection and resistance.

**ADVANCED, COMFORTABLE AND
NON METALLIC SAFETY SHOES**



HIKER BLACK

6B84.20 S3 SRC

Material Black Nubuck Leather
Lining Space 3D + Hydratec
Sole Fusion - Bicolor PU
Toe Cap CarbonLight - Composite
Insole Q-flex - Composite
Insock Comfort
Size 36 - 47



TRAIL BOOT

6B45.20 S3 SRC

Material Black Nubuck Leather
Lining Poromax
Sole Fusion - Bicolor PU
Toe Cap CarbonLight - Composite
Insole Q-flex - Composite
Insock Comfort
Size 36 - 47



TRAIL SHOE

6A45.20 S3 SRC

Material Black Nubuck Leather
Lining Poromax
Sole Fusion - Bicolor PU
Toe Cap CarbonLight - Composite
Insole Q-flex - Composite
Insock Comfort
Size 36 - 47



TRAIL SANDAL

6A10.20 S1P SRC

Material Black Nubuck Leather
Lining Poromax
Sole Fusion - Bicolor PU
Toe Cap CarbonLight - Composite
Insole Q-flex - Composite
Insock Comfort
Size 36 - 47

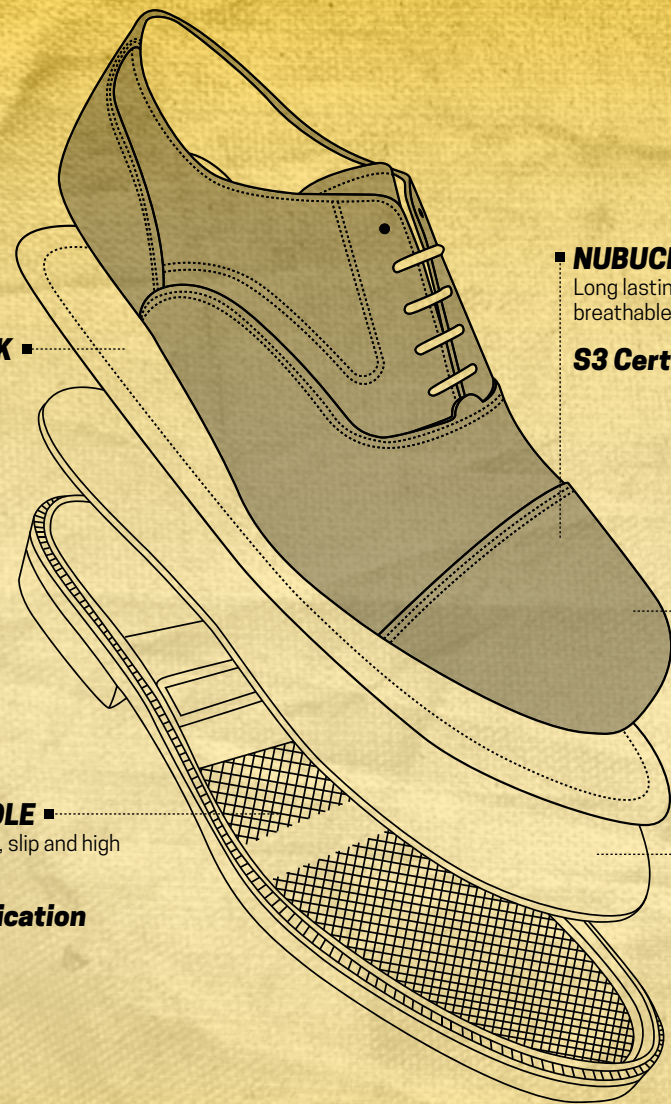


CITY

TECHNICAL SPECS



LEATHER INSOCK ■
Soft and breathable.



■ **NUBUCK LEATHER**
Long lasting, flexible and breathable.
S3 Certification

■ **STEEL TOE CAP**
Protects against pressure up to 200 joules.

CITY PU SOLE ■
Resistant to oil, slip and high temperatures.
SRB Certification

■ **Q-FLEX INSOLE**
Anti-perforation, non-metallic and anti-static insole.

**SAFE AND STYLISH
SAFETY SHOES**

TOWORKFOR SAFETY SHOES
SAFETY IN A CLASSIC STYLE.



VIGO
8A14.22 S3 SRB

Material Brown Nubuck Leather
Lining Aniline Leather
Sole City - PU
Toe Cap Steel
Insole Q-flex - Composite
Insock Comfort
Size 39 - 47



OXFORD
8A04.50 S3 SRB

Material Black Full Grain Leather
Lining Aniline Leather
Sole City - PU
Toe Cap Steel
Insole Q-flex - Composite
Insock Cow Leather
Size 39 - 47



LIVERPOOL
8A04.22 S3 SRB

Material Brown Nubuck Leather
Lining Aniline Leather
Sole City - PU
Toe Cap Steel
Insole Q-flex - Composite
Insock Cow Leather
Size 39 - 47



ADVANTAGE

TECHNICAL SPECS

TWF INSOCK
Ultralight and anti-static insock.

BLACK PRINTED LEATHER
Excellent printed leather breathable and flexible.
S3 Certification

CARBONLIGHT TOE CAP
Non-metallic and ultra-light toe cap against pressure up to 200 joules.

Q-FLEX INSOLE
Anti-perforation, non-metallic and anti-static insole.

ACTION 2 NITRILE RUBBER SOLE
Excellent anti-slip features. Protects against high temperatures up to 300°C.

SRC HRO Certification

SOLID AND QUALITY SAFETY SHOES



PORTO 8A51.90 S3 SRC HRO

Material Black Printed Leather
Lining Space 3D
Sole Action 2 - Nitrile Rubber
Toe Cap CarbonLight - Composite
Insole Q-flex - Composite
Insock TWF
Size 35 - 50



LISBOA 8B51.90 S3 SRC HRO

Material Black Printed Leather
Lining Space 3D
Sole Action 2 - Nitrile Rubber
Toe Cap CarbonLight - Composite
Insole Q-flex - Composite
Insock TWF
Size 35 - 50



COIMBRA 8B50.91 S3 SRC HRO

Material Black Printed Leather
Lining Space 3D
Sole Action 2 - Nitrile Rubber
Toe Cap CarbonLight - Composite
Insole Q-flex - Composite
Insock TWF
Size 35 - 50



EXTREME PROTECTION

UTILITY

TECHNICAL SPECS

COMFORT INSOCK ■
Soft and light with anti-static points.

Q-FLEX INSOLE ■
Anti-perforation, non-metallic and anti-static insole.

FUSION BICOLOR PU SOLE ■
Extremely soft and comfortable PU midsole in combination with a hard PU outsole which provides great grip.

SRC Certification



ANILINE PREMIUM LEATHER
High quality leather with excellent resistance to water, petrol and oils. Long lasting, flexible and breathable.

S3 Certification

CARBONLIGHT TOE CAP
Non-metallic and ultra-light toe cap against pressure up to 200 joules.

TOE REINFORCEMENT
Extra protection and resistance.

FAFE 6A51.90 S3 SRC

Material Black Aniline Leather
Lining Space 3D
Sole Fusion - Bicolor PU
Toe Cap CarbonLight - Composite
Insole Q-flex - Composite
Insock Comfort
Size 36 - 47



BEJA 6B51.90 S3 SRC

Material Black Aniline Leather
Lining Space 3D
Sole Fusion - Bicolor PU
Toe Cap CarbonLight - Composite
Insole Q-flex - Composite
Insock Comfort
Size 36 - 47



SEIA 6A49.11 S1P SRC

Material Grey Suede Leather
Lining Space 3D
Sole Fusion - Bicolor PU
Toe Cap CarbonLight - Composite
Insole Q-flex - Composite
Insock Basic
Size 36 - 47



LAGOS 6A08.11 S1P SRC

Material Grey Suede Leather
Lining Space 3D
Sole Fusion - Bicolor PU
Toe Cap CarbonLight - Composite
Insole Q-flex - Composite
Insock Basic
Size 36 - 47



SINES 6A49.90 S3 SRC

Material Black Printed Leather
Lining Space 3D
Sole Fusion - Bicolor PU
Toe Cap CarbonLight - Composite
Insole Q-flex - Composite
Insock Basic
Size 36 - 47



ALMADA 6B49.90 S3 SRC

Material Black Printed Leather
Lining Space 3D
Sole Fusion - Bicolor PU
Toe Cap CarbonLight - Composite
Insole Q-flex - Composite
Insock Basic
Size 36 - 47



LEIRIA 6A49.30 S3 SRC

Material Black Printed Leather
Lining Space 3D
Sole Fusion - Bicolor PU
Toe Cap CarbonLight - Composite
Insole Steel
Insock Basic
Size 36 - 47



MAIA 6B49.30 S3 SRC

Material Black Printed Leather
Lining Space 3D
Sole Fusion - Bicolor PU
Toe Cap CarbonLight - Composite
Insole Steel
Insock Basic
Size 36 - 47





PROMOTIONAL MATERIALS

ACCESSORIES

TOWORKFOR SOLES

TOWORKFOR MATERIALS

TOWORKFOR INSOLES, INSOCKS AND TOECAPS

STANDARDS

PROMOTIONAL MATERIALS

TOWORKFOR PROMOTIONAL MATERIALS ► DELIVERED WITH YOUR ORDER.

WALL POSTERS

Measures 50 X 70 cm



MUPPIE

Measures 68 X 98 cm



FLOOR DISPLAY

Measures 50 x 160 x 50 cm
Quantity 8 Shoes



COUNTER DISPLAY

Measures 37 x 29 x 17 cm
Quantity 1 Shoe



Measures 37 x 29 x 17 cm
Quantity 1 Shoe



ACCESSORIES

INSOCKS



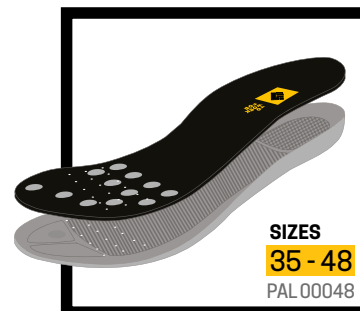
SIZES
36 - 47
PAL 00050

BIORELAX

TOWORKFOR BIORELAX is an anti-fatigue and anti-bacterial insock with carbon active foot bed. This 100% breathable insole is extra-light, antistatic and made with recycled materials. It's a shock proof insole which will maintain its initial shape throughout its lifetime. It has an excellent absorption and desorption features. It absorbs and cushions the shock produced when walking. Absorbs sweat to help keep feet dry and is able to evaporate the sweat very quickly due to the carbon crystals. ECO FRIENDLY INSOLE - CO2 Free Manufacturing Process.

MAIN BENEFITS

- 100% Breathable Insole
- Anti-Fatigue
- CARBON ACTIVE - Anti-Smell Effective Treatment
- Anti-Static
- Made in EU



SIZES
35 - 48
PAL 00048

COMFORT

TOWORKFOR COMFORT Insoles help adapt the flat midsole of the footwear to your foot. The distinct shape helps to stabilize the foot, while the deep, structured heel cup and full-length foam provide support and comfort. TWF Comfort Insoles are made of very soft PU foam with shock absorption points. The anatomical shape is slim and contoured, helps stabilize and support the foot, which can help to reduce stress on feet, ankles and knees. The deep heel helps support the foot during high-impact activities and long distances and supports the plantar arch, guaranteeing maximum comfort. It's antistatic and washable.

MAIN BENEFITS

- Super Soft PU
- Shock Absorption Points
- Anatomical Shape
- Deep Heel Cup
- Made in EU

SHOELACES

Flat and round laces.
130 cm for Safety Boots.
100 cm for Safety Shoes.



ROUND BLACK
100CM - CRD 00031
130CM - CRD 00052



FLAT BLACK
100CM - CRD 00081
130CM - CRD 00099



ROUND GREY
100CM - CRD 00102
130CM - CRD 00103



FLAT GREY
100CM - CRD 00086
130CM - CRD 00101



ROUND BROWN
100CM - CRD 00064
130CM - CRD 00089



FLAT WHITE
100CM - CRD 00082
130CM - CRD 00098

COUNTER DISPLAY

For 8 insole packages
and 12 shoelaces packages.



TOWORKFOR SOLES

SAFELIGHT
EVA SAFETY SOLE
SRC HRO
Collection: **X-FAST**

EVA is one of the best shock absorption and lightweight material for a sole. The SAFELIGHT sole innovates with a special EVA compound specific for safety shoes: anti-static with excellent abrasion and anti-slip features, resistant to high temperatures up to 300°C.

AIR TUBELESS
RUBBER SOLE
SRC ESD **AIR TUBELESS**
Collection: **SAFETY RUNNERS**

Rubber is a great material for safety soles, extremely durable, with excellent anti-slip and the best resistance to fuel and oils. The AIR TUBELESS sole presents an exclusive comfort technology biomechanically tested by INESCOP. This innovation prevents foot ache and low back pain, produces smoother walking pattern and reduces 55% of the impact forces enhancing comfort perception. It is an electrostatically dissipative conductive sole - ESD.

MICHELIN NORTH
NITRILE RUBBER SOLE
SRC HRO **MICHELIN**
Collection: **MICHELIN FULL GRIP**

Nitrile Rubber is a great material for safety soles, extremely durable, with excellent anti-slip and the best resistance to fuel and oils. The MICHELIN NORTH sole it's multifunctional, designed for all outdoor work activities allowing full control. The unique Michelin design combines a winner ice tire with a winner mud tire providing greater abrasion and anti slip features, improving anti-static characteristics and higher resistance to oils and fire - temperatures up to 300°C.

BASKET
RUBBER SOLE
SRC ESD
Collection: **BASKET**

Rubber is a great material for safety soles, extremely durable, with excellent anti-slip and the best resistance to fuel and oils. The BASKET sole presents an exclusive design inspired by basket sneakers to guarantee higher flexibility, optimal comfort and greater elasticity. This sole has excellent slip resistance, either in wet floor or ceramic floor. It is an electrostatically dissipative conductive sole - ESD.

ATOMIC
TPU BICOLOR SOLE
SRC
Collection: **STREET | ATOMIC**

TPU is a softer, more flexible material for high quality safety footwear soles with superior wear resistance and abrasion resistance. The ATOMIC sole is TPU bicolor and presents a micro-geometric hexagon trace, ensuring full contact with the ground providing excellent slip resistance features. The rounded heel transfers the heel impact force energy to the lifting of the foot increasing the comfort perception.

HERO
NITRILE RUBBER SOLE
SRC HRO
Collection: **WORKING CLASS HERO**

Nitrile Rubber is a great material for safety soles, extremely durable, with excellent anti-slip and the best resistance to fuel and oils. The HERO sole has a good depth of the groove track, excellent adhesion to the surface, either in wet steel floor or irregular industrial floor and resistance to high temperatures up to 300°C. The rounded heel transfers the heel impact force energy to the lifting of the foot increasing the comfort perception.

SPORT 3
PU | TPU SOLE
SRC
Collection: **SPORT 2K14**

Polyurethane is flexible and lightweight. TPU is a softer, more flexible material for high quality safety footwear soles with superior wear resistance and abrasion resistance. The SPORT 3 sole has soft polyurethane midsole, which guarantees excellent restitution of impact energy, softness and comfort for prolonged use. The TPU outsole provides excellent adhesion and protection against high temperatures up to 120°C.

CITY
PU SOLE
SRB
Collection: **CITY**

Polyurethane is flexible, lightweight and resistant to oil and 120°C heat. The CITY sole has soft polyurethane which guarantees excellent restitution of impact energy, softness and comfort for prolonged use. It's extremely light, flexible and elastic. It has good adhesion, good slip and heat resistance.

SPORT
PU SOLE
SRB
Collection: **SPORT**

Polyurethane is flexible, lightweight and resistant to oil and 120°C heat. The SPORT sole is extremely light, flexible and elastic. It has good adhesion, resistance to oils and heat with great cushioning. The exclusive design was developed according with biomechanical principles guaranteeing great comfort characteristics.

ACTION 2
NITRILE RUBBER SOLE
SRC HRO
Collection: **ADVANTAGE**

Nitrile Rubber is a great material for safety soles, extremely durable, with excellent anti-slip and the best resistance to fuel and oils. The ACTION 2 sole has optimum depth allowing an excellent adhesion in all surfaces, either in wet steel floor or irregular industrial floor and resistance to high temperatures up to 300°C. This sole has excellent slip resistance and greater abrasion features.

FUSION
PU | PU SOLE
SRC
Collection: **FUSION | UTILITY**

Polyurethane is flexible, light weight and resistant to oil and 120°C heat. The FUSION sole has soft polyurethane midsole, which ensures excellent return impact energy, comfort for prolonged use in combination with an hard polyurethane which provides great grip and protection against high temperatures.

TOWORKFOR MATERIALS

HYDRATEC
WATERPROOF MEMBRANE

HYDRATEC® is a special membrane which absorbs the water vapor and removes it through the lining to the outside. This keeps the foot warm and dry even in extreme situations. The best feature about it is that the higher the physical activity, the more efficient the Hydratec membrane works. Hydratec membrane also provides effective protection from low temperatures and rain. You can find this technology in our models TRACTION (page 17) and HIKER BLACK (page 39).

HydraTec
WaterProof Breathable WindProof

ANILINE
ANILINE PREMIUM LEATHER

High quality leather with excellent resistance to water, petrol and oils. It is great for heavy physical work, long-lasting. It's very flexible and with good breathability features.

MICROFIBER
POLYESTER FIBERS

Innovative material made of polyester fibers, water resistant and highly durable. Allows natural breathing. Presents a wide range of colours that keeps with the shoe throughout its life.

NUBUCK
NUBUCK LEATHER

Soft treated leather, with excellent transpiration characteristics that significantly increases the level of comfort. Excellent resistance and durability.

MESH POROMAX
ABSORBENT LINING

Innovative technology due to a special structure of internal chambers that removes hot moist air over the top of the shoe and facilitates uniform temperature distribution within the shoes.

SUEDE
SUEDE LEATHER

Treated leather with excellent transpiration features and flexibility. No resistance to water, but is perfect to work in hot and dry climate.

MESH SPACE 3D
MESH LINING

Special mesh fabric for excellent breathability. High durability of the material allows to keep the properties throughout the period of use.

MATERIALS

TOWORKFOR INSOLES, INSOCKS AND TOE CAPS

CARBONLIGHT
COMPOSITE TOE CAP

Protects the toes against mechanical damage and pressure up to 200 Joules. At high loads does not disintegrate. It is thermal insulating. Up to 50% lighter than steel insulating.

ALUMINIUM
ALUMINIUM TOE CAP

Protects the toes against mechanical damage and pressure up to 200 Joules. Not subject to corrosion, has low thermal conductivity. Up to 50% lighter than steel.

STEEL
STEEL TOE CAP

Protects the toes against mechanical damage and pressure up to 200 Joules.

BIORELAX
ANTI-FATIGUE INSOCK

Anti-fatigue and anti-bacterial with carbon active foot bed. It's 100% breathable, extra-light, antistatic, and made with recycled materials.

COMFORT
COMFORT INSOCK

Made of polyurethane foam with anti-static points. Supports and stabilizes the foot, optimizing the distribution of the weight and facilitating the balance. Easy to remove for cleaning and drying.

Q-FLEX
COMPOSITE INSOLE

Non-metallic and anti-static, made of advanced composite materials. Anti-perforation protection, with greater flexibility and ergonomics. It is thermal insulating.

STEEL
STEEL INSOLE

Metallic and anti-static. Anti-perforation protection.

51

STANDARDS

EN ISO 20344:2011 - Test methods for footwear designed as Personal Protective Equipment.

EN ISO 20345:2011 - Specifications for safety footwear for general use: footwear with specific characteristics to protect the user against injuries that might occur in the work place. Fit out with a toecap, this footwear protects the user against crushing impacts with a protection provided on 200 Joules.

EN ISO 20347:2012 - Specifications for safety footwear: footwear with specific characteristics to protect the user against injuries that might occur in the work place. (This footwear is not equipped with toecap for feet protection).

SYMBOL	REQUIREMENTS/CHARACTERISTICS	NECESSARY PERFORMANCE
P	Penetration resistance sole	≥1100 N
E	Heel energy absorption	≥ 20 J
A	Antistatic footwear	Between 0,1 and 1000 MΩ
C	Conductive footwear	< 0,1 MΩ
EN 50321	Electrically insulating footwear	Class 0 or 00
WRU	Water penetration resistant uppers	≥ 60 min.
CI	Insulation against cold	Test at -17°C
HI	Insulation against heat	Test at 150°C
HRO	Resistance to hot contact of the outsole	Test at 300°C
FO	Resistance to fuel oil of the outsole	≤ 12%
WR	Water Resistance	≤ 3 cm ²
M	Metatarsal protection (only for EN ISO 20345)	≤ 40 mm (Size 41/42)
AN	Ankle protection	≤ 10 kN
CR	Cut resistance of the upper	≥ 2,5 (index)

SYMBOL	SLIP RESISTANCE	NECESSARY PERFORMANCE
SRA	Ceramic + Sodium lauryl sulfate	Heel ≥ 0.28 / flat ≥ 0.32
SRB	Steel + glycerin	Heel ≥ 0.13 / flat ≥ 0.18
SRC	SRA + SRB	
ESD	Electrostatic discharge (EN 61340-2-1)	Between 0,1 and 35 MΩ

CATEGORY	CLASS	REQUIREMENTS	SYMBOLS
SB		Shoe with basic requirements - footwear with toecap - resistant to 200 Joules	
S1	I	Closed heel area Antistatic properties Heel energy absorption Resistance to fuel oil Resistance to oils	A E FO
S1P	I	Like S1 integrated by perforation resistant	A/E/FO/P
S2	I	Like S1 integrated by water penetration and absorption	A/E/FO/WRU
S3	I	Like S2 integrated by perforation resistant Cleated outsole	A/E/FO/WRU/P
O1	I	Closed heel area Antistatic properties Heel energy absorption	A E
O2	I	Like O1 integrated by water penetration and absorption	A/E/WRU

MATERIALS AND PRODUCTION:

All the materials used, either natural or synthetic, and also the applied production techniques were chosen to comply with the requirements of the above European standard in what concerns safety, ergonomics and comfort.

Besides the required basic characteristics, the footwear may have additional characteristics indicated by the symbols or categories in the labels stitched inside the footwear.

DIAGRAM LEGENDS

	Resistant sole up to 300°C		Q-FLEX - Perforation resistant
	100% non metallic		STEEL - Perforation resistant
	Water resistant		CARBONLIGHT - Toecap impact resistant up to 200 Joules
	HYDRATEC - waterproof membrane		ALUMINIUM - Toecap impact resistant up to 200 Joules
	Thinsulate		STEEL - Toecap impact resistant up to 200 Joules
	ESD (ElectroStatic Discharge)		AIR TUBELESS (Anti-fatigue tubular sole)

SOLES

TOWORKFOR



**TO
WORK
FOR®**



AMF, Lda
Rua São Cipriano nº658
Tabuadelo
4835-461 Guimarães
Portugal



+351 253 527 163



info@toworkfor.pt



TOWORKFOR.PT

BUILT BY **AMF** 

OFFICIAL DISTRIBUTOR